

USU Archeological Services Investigations of Prehistoric Use of the Camp Williams Uplands, Utah County, Utah



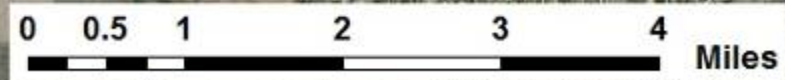
L. Ted Neff
Kenneth P. Cannon
USU Archeological Services
Shaun R. Nelson
Utah National Guard

UPAC Winter Meeting
Logan, Utah
9 February 2013



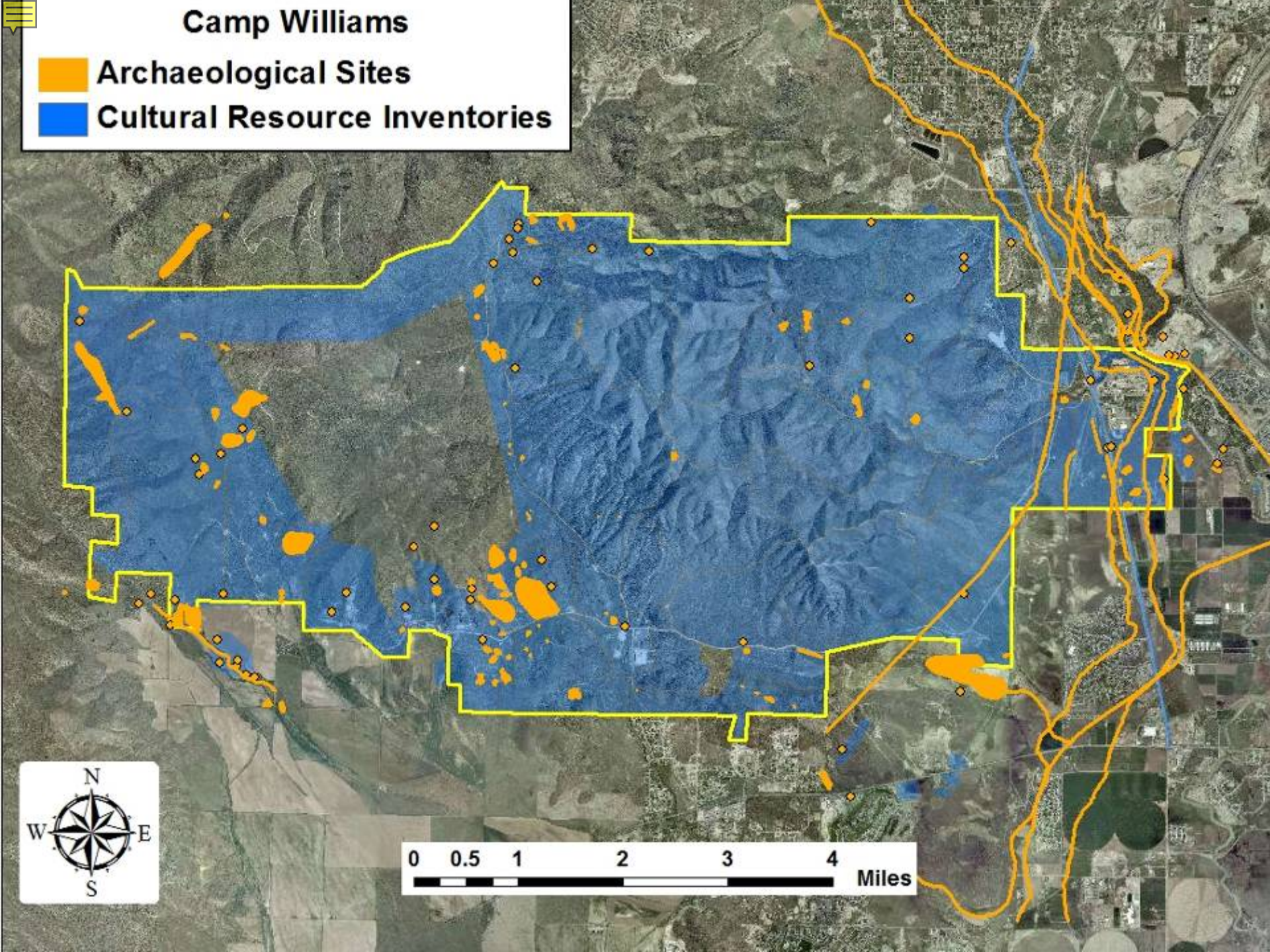
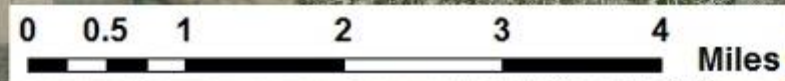


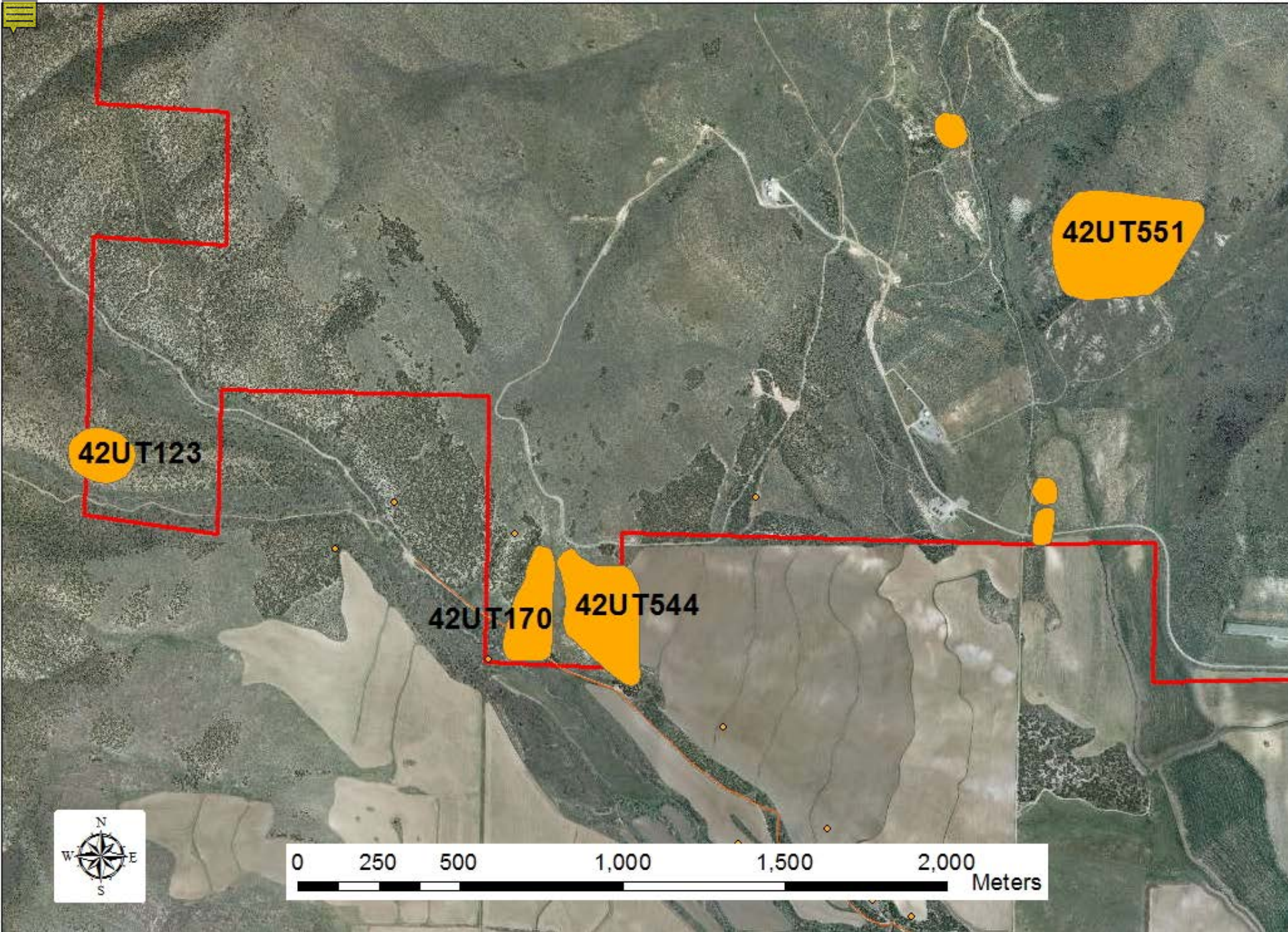
Camp Williams



Camp Williams

- Archaeological Sites
- Cultural Resource Inventories



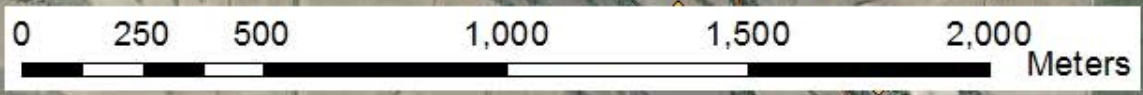


42UT123

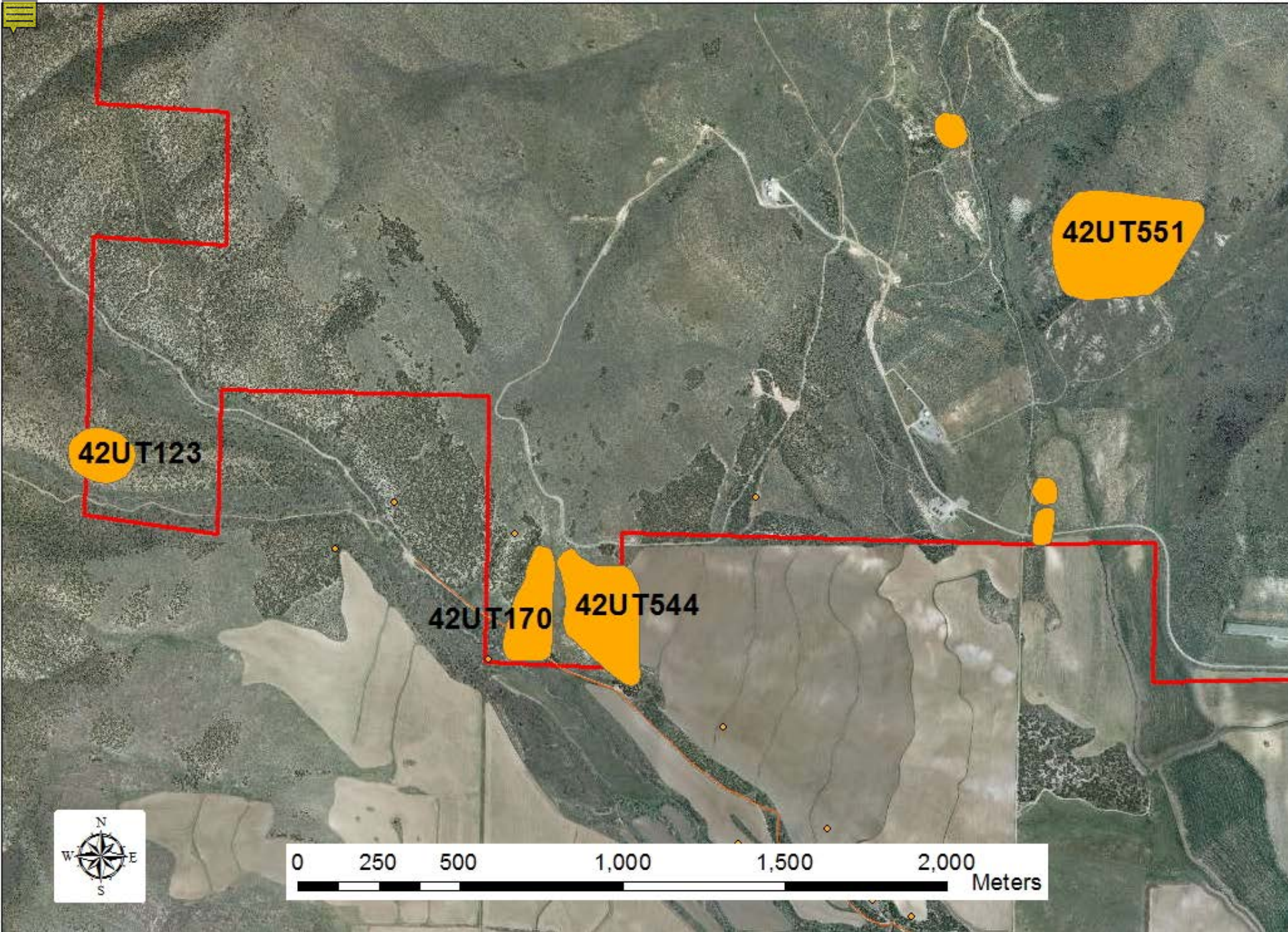
42UT170

42UT544

42UT551





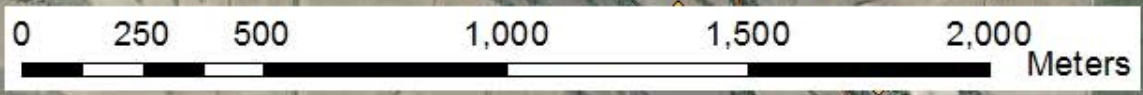


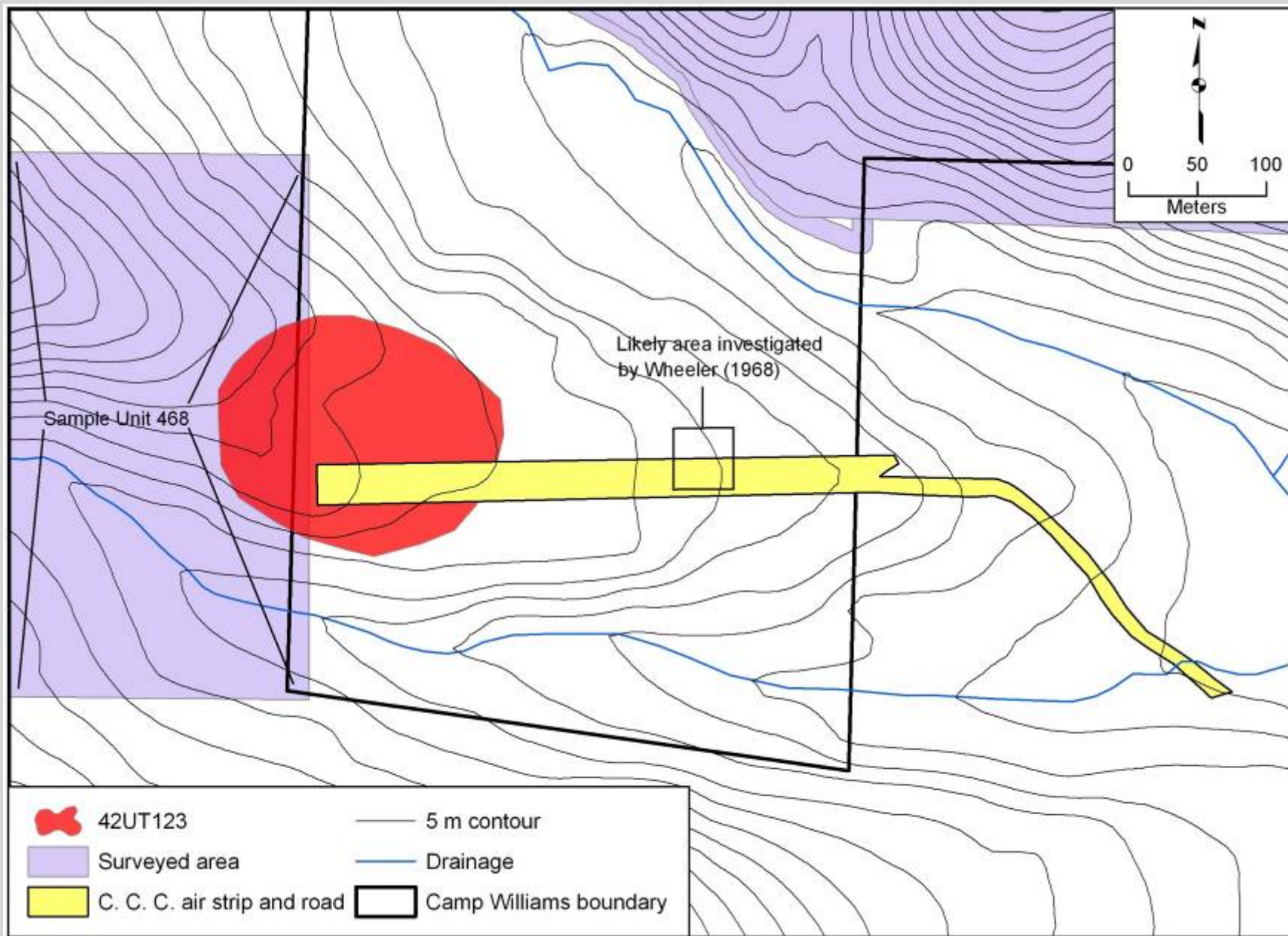
42UT123

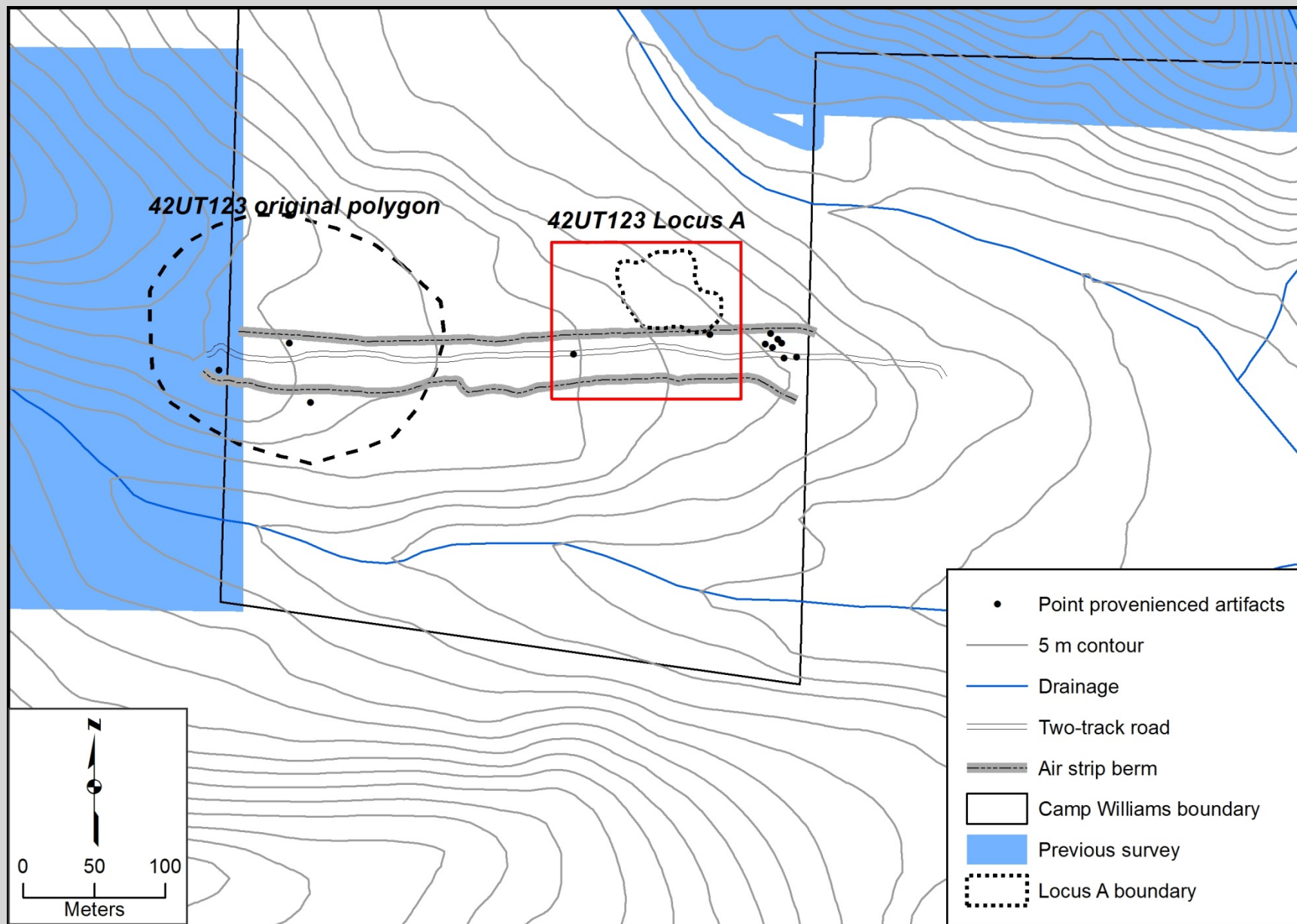
42UT170

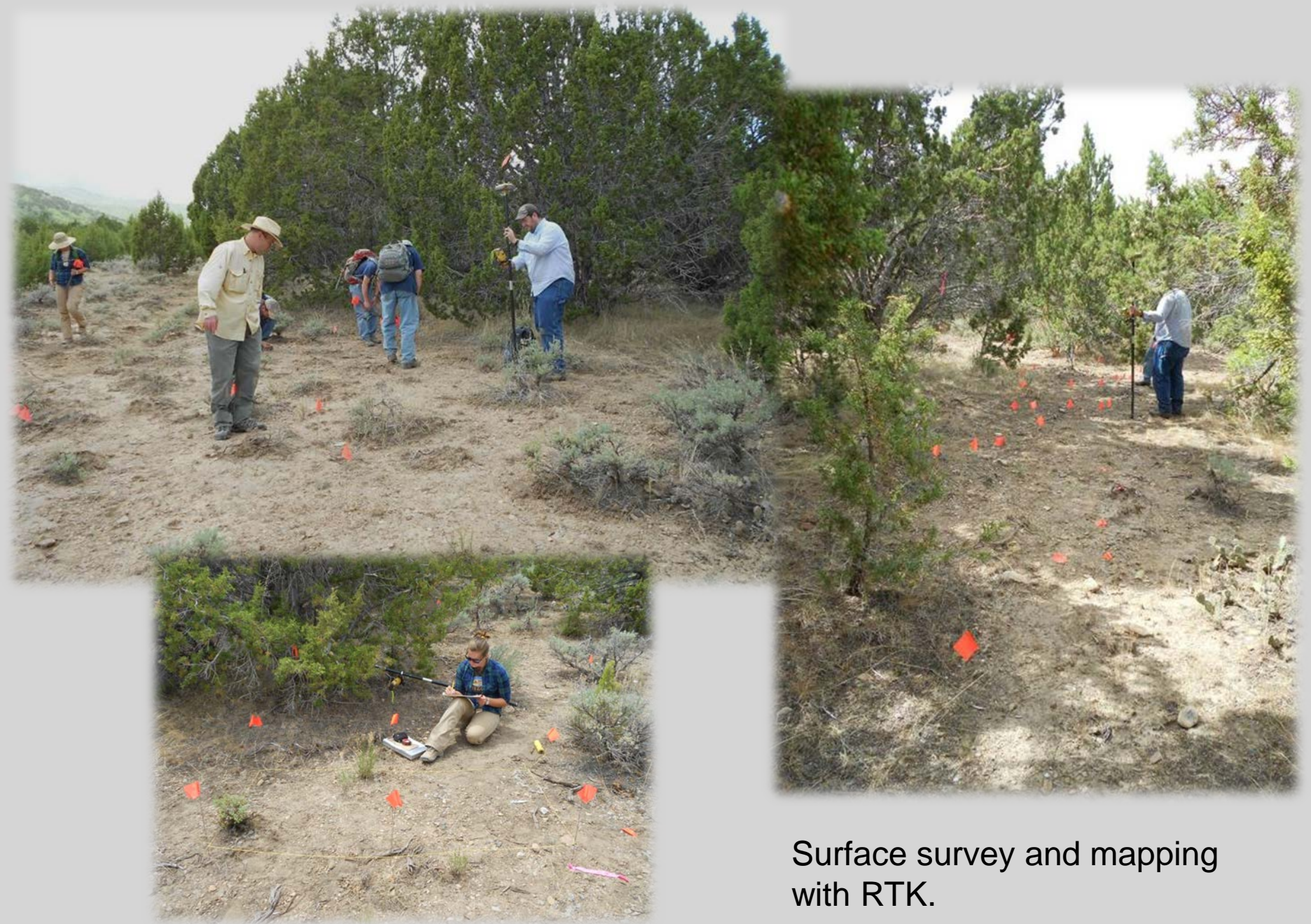
42UT544

42UT551





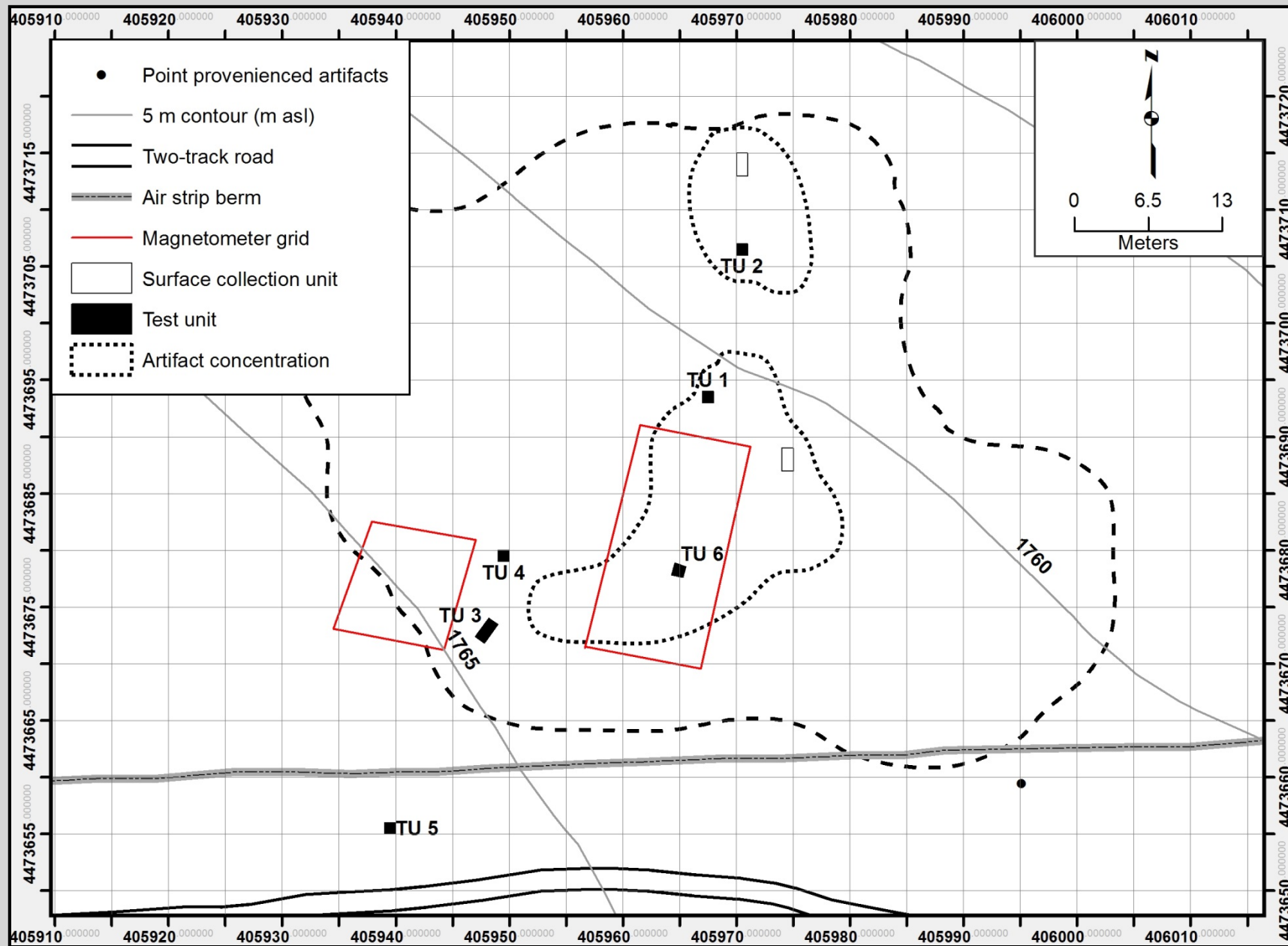




Surface survey and mapping
with RTK.



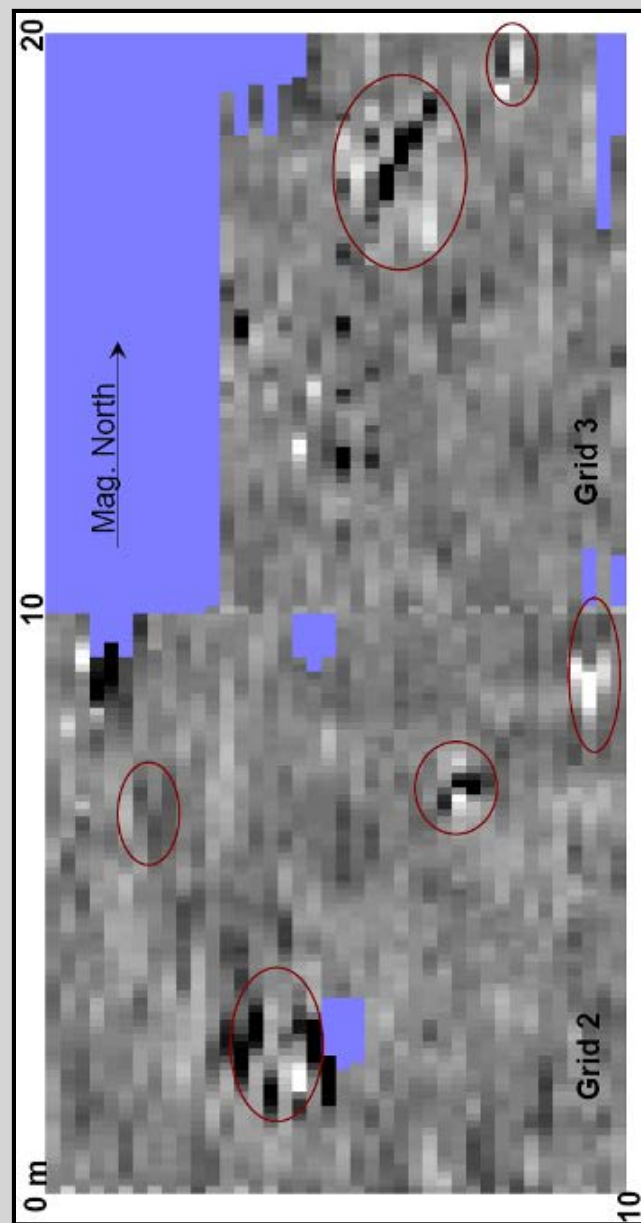
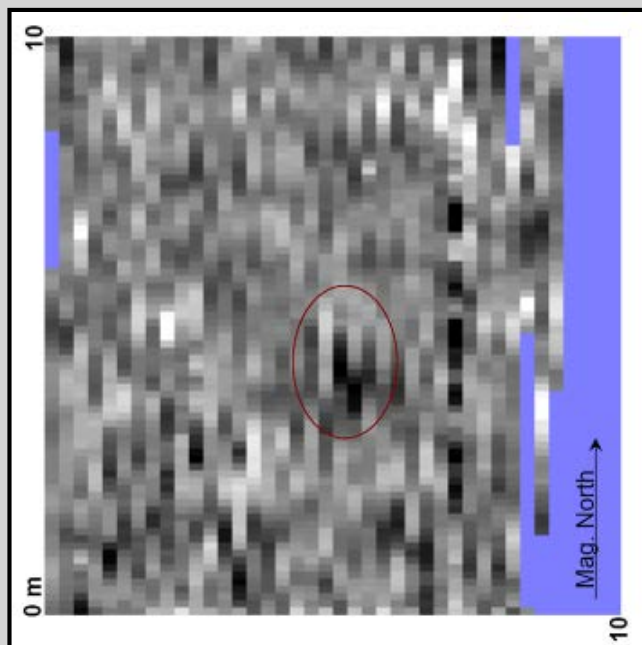
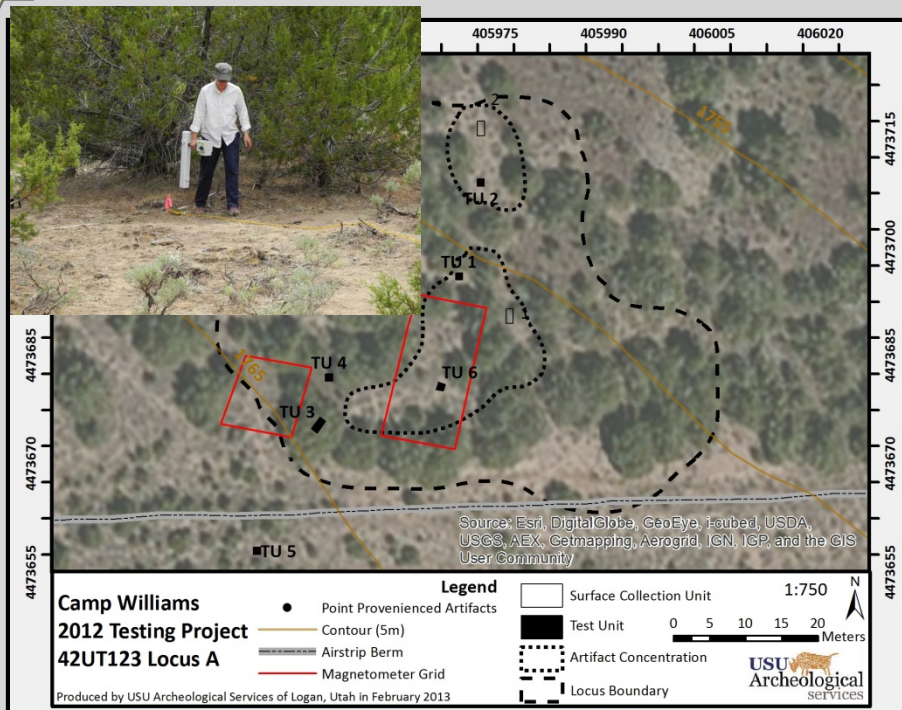




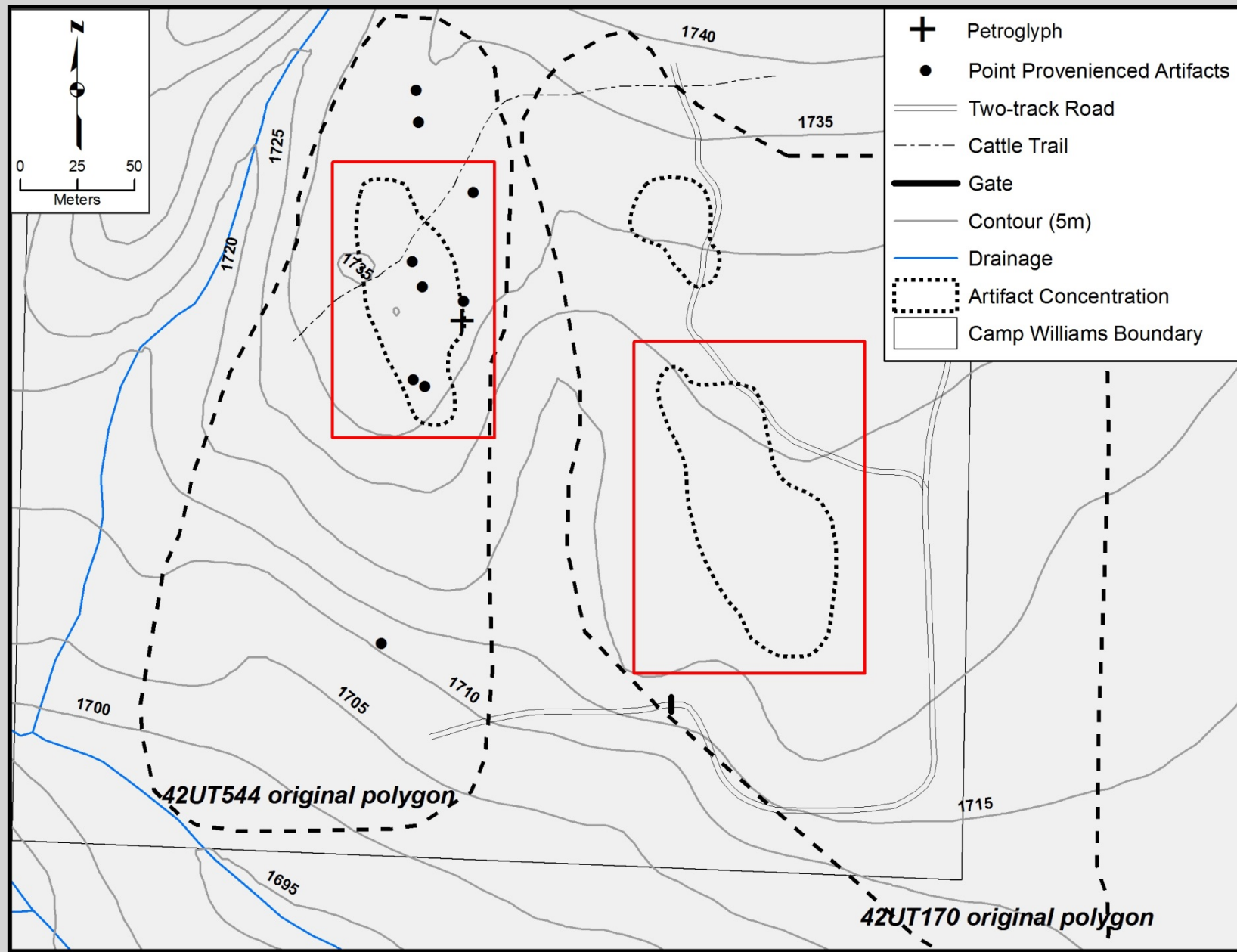






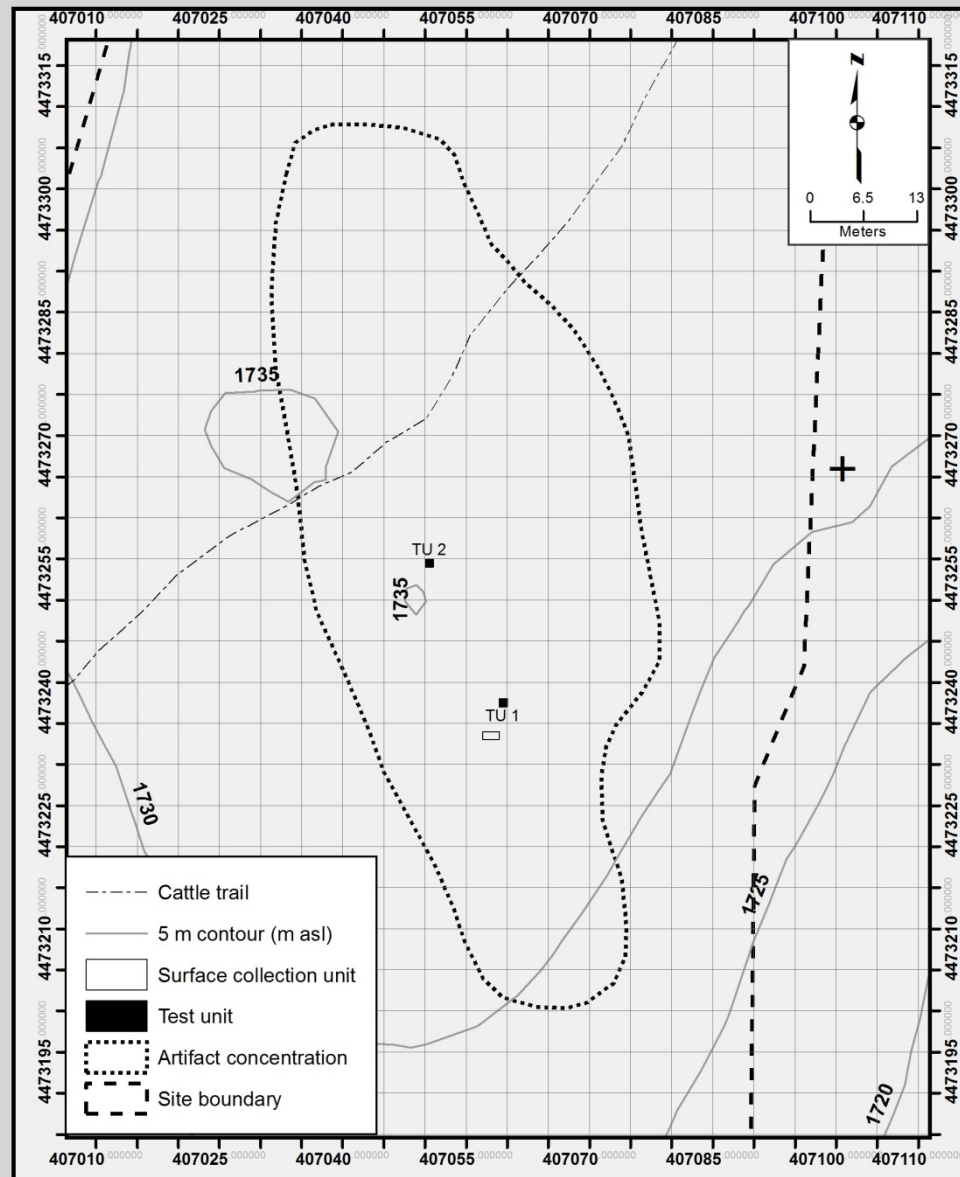












42UT544

- Excavation of two 1m² test units.
- One 1-x-2 m surface collection unit.
- Excavations revealed two aceramic components.



2130 +/- 25 BP
207-88 cal BC (83.4%)

Modern



Ongoing Analyses

- **Geochemical analysis of obsidian artifacts by Dr. Richard Hughes (Geochemical Research Laboratory).**
- **OHD by Dr. Tom Origer (Origer and Associates).**
- **Macrobotanical remains by Dr. Tim Riley (USU-Eastern)**
- **Protein residue analysis of stone tools (PaleoResearch Institute).**
- **Pollen/phytolith/starch analysis of groundstone (PaleoResearch Institute).**



